

Quiz

WHAT IS YOUR DIAGNOSIS?

A 58-year-old Japanese woman who complained of body weight loss (−4.7 kg/year) was referred to Takatsuki General Hospital. The patient had no medical history of abnormal genital bleeding, but a gynecological examination was performed as a part of a systemic examination for ruling out malignancies. In addition to multiple uterine myomas (up to 4 cm in diameter) detected by transvaginal ultra-

sonography, a small endocervical polyp (5 mm in length; Fig. 1) was found and excised promptly. The polyp seemed macroscopically to be an ordinary one, and the gynecologist could not find any remarkable changes. However, the hematoxylin-eosin stained tissue specimen showed presence of many pigmented spindle-shaped cells in its stromal portion (Figs. 2 and 3).

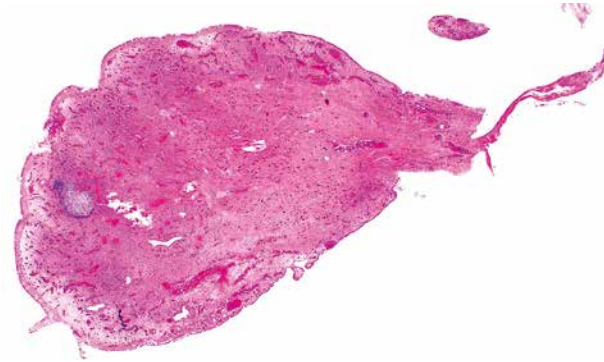


Fig. 1.

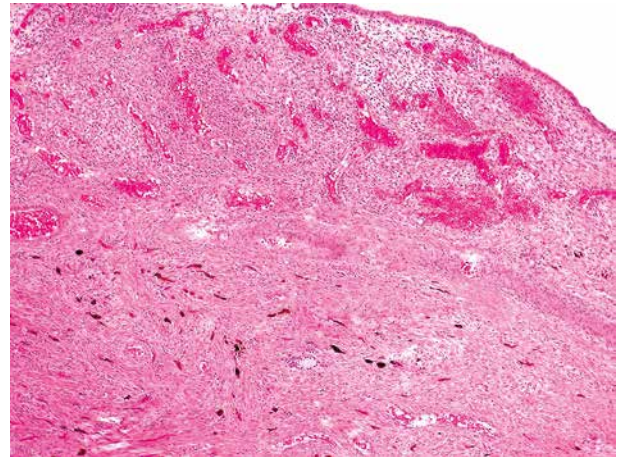


Fig. 2.

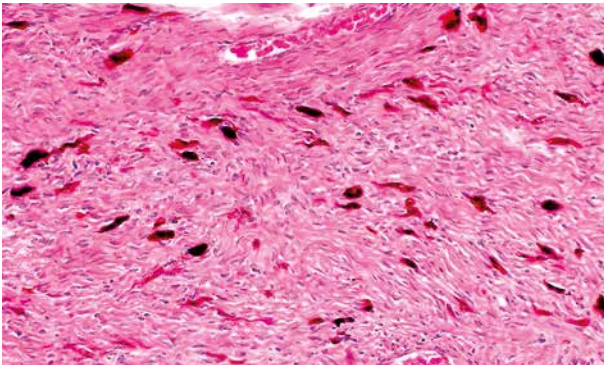


Fig. 3.

Sayuri Masuko¹, Yoshihiro Ikura¹, Hiroki Kato², Yasuhiro Iwai¹

¹Department of Pathology, Takatsuki General Hospital, Takatsuki, Japan

²Department of Obstetrics and Gynecology, Takatsuki General Hospital, Takatsuki, Japan

Answers should be sent to the Editorial Office by 31.05.2016. The correct answer will be announced in the next issue of the *Polish Journal of Pathology*. All participants with the highest number of correct answers to the quizzes published in vol. 66 (4 issues) will be entered into the prize draw for a book.